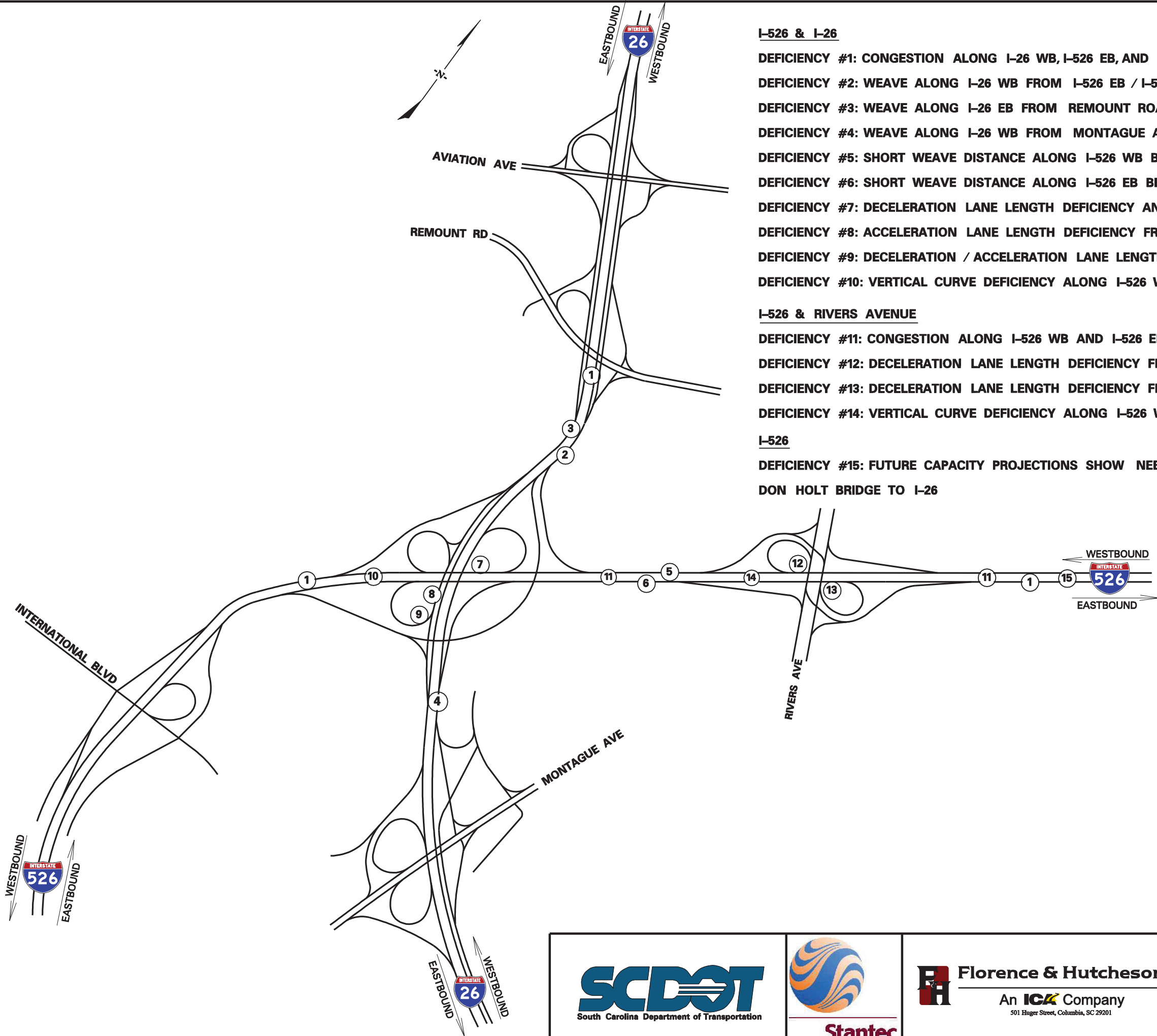


APPENDIX B – I-26 & I-526 INTERCHANGE CONCEPT PLANS

10/9/2012
i:\1059\system to system\Deficiency-Existing.dgn



I-526 & I-26

- DEFICIENCY #1: CONGESTION ALONG I-26 WB, I-526 EB, AND I-526 WB IN THE AFTERNOON**
- DEFICIENCY #2: WEAVE ALONG I-26 WB FROM I-526 EB / I-526 WB TO REMOUNT ROAD / AVIATION AVENUE C-D ROAD**
- DEFICIENCY #3: WEAVE ALONG I-26 EB FROM REMOUNT ROAD / AVIATION AVENUE C-D ROAD TO I-526 EB-I-526 WB**
- DEFICIENCY #4: WEAVE ALONG I-26 WB FROM MONTAGUE AVENUE TO I-526**
- DEFICIENCY #5: SHORT WEAVE DISTANCE ALONG I-526 WB BETWEEN RIVERS AVENUE AND I-26**
- DEFICIENCY #6: SHORT WEAVE DISTANCE ALONG I-526 EB BETWEEN I-26 AND RIVERS AVENUE**
- DEFICIENCY #7: DECELERATION LANE LENGTH DEFICIENCY AND WEAVE FROM I-526 WB TO I-26 EB LOOP RAMP**
- DEFICIENCY #8: ACCELERATION LANE LENGTH DEFICIENCY FROM I-26 EB TO I-526 EB LOOP RAMP**
- DEFICIENCY #9: DECELERATION / ACCELERATION LANE LENGTH DEFICIENCY AND WEAVE ALONG I-26 EB C-D ROAD**
- DEFICIENCY #10: VERTICAL CURVE DEFICIENCY ALONG I-526 WEST OF I-26**

I-526 & RIVERS AVENUE

- DEFICIENCY #11: CONGESTION ALONG I-526 WB AND I-526 EB IN THE AFTERNOON**
- DEFICIENCY #12: DECELERATION LANE LENGTH DEFICIENCY FROM I-526 WB TO RIVERS AVENUE EB LOOP RAMP**
- DEFICIENCY #13: DECELERATION LANE LENGTH DEFICIENCY FROM I-526 EB TO RIVERS AVENUE WB LOOP RAMP**
- DEFICIENCY #14: VERTICAL CURVE DEFICIENCY ALONG I-526 WEST OF RIVERS AVENUE**

I-526

- DEFICIENCY #15: FUTURE CAPACITY PROJECTIONS SHOW NEED FOR POTENTIAL WIDENING FROM THE DON HOLT BRIDGE TO I-26**



EXISTING DEFICIENCIES ALONG I-526-I-26 CORRIDOR	
NOT TO SCALE	
SEPTEMBER 2012	SHEET 1

10/9/2012

I:\1059\system to system\Plan Sht_Alt_01.dgn



ALTERNATIVE 1



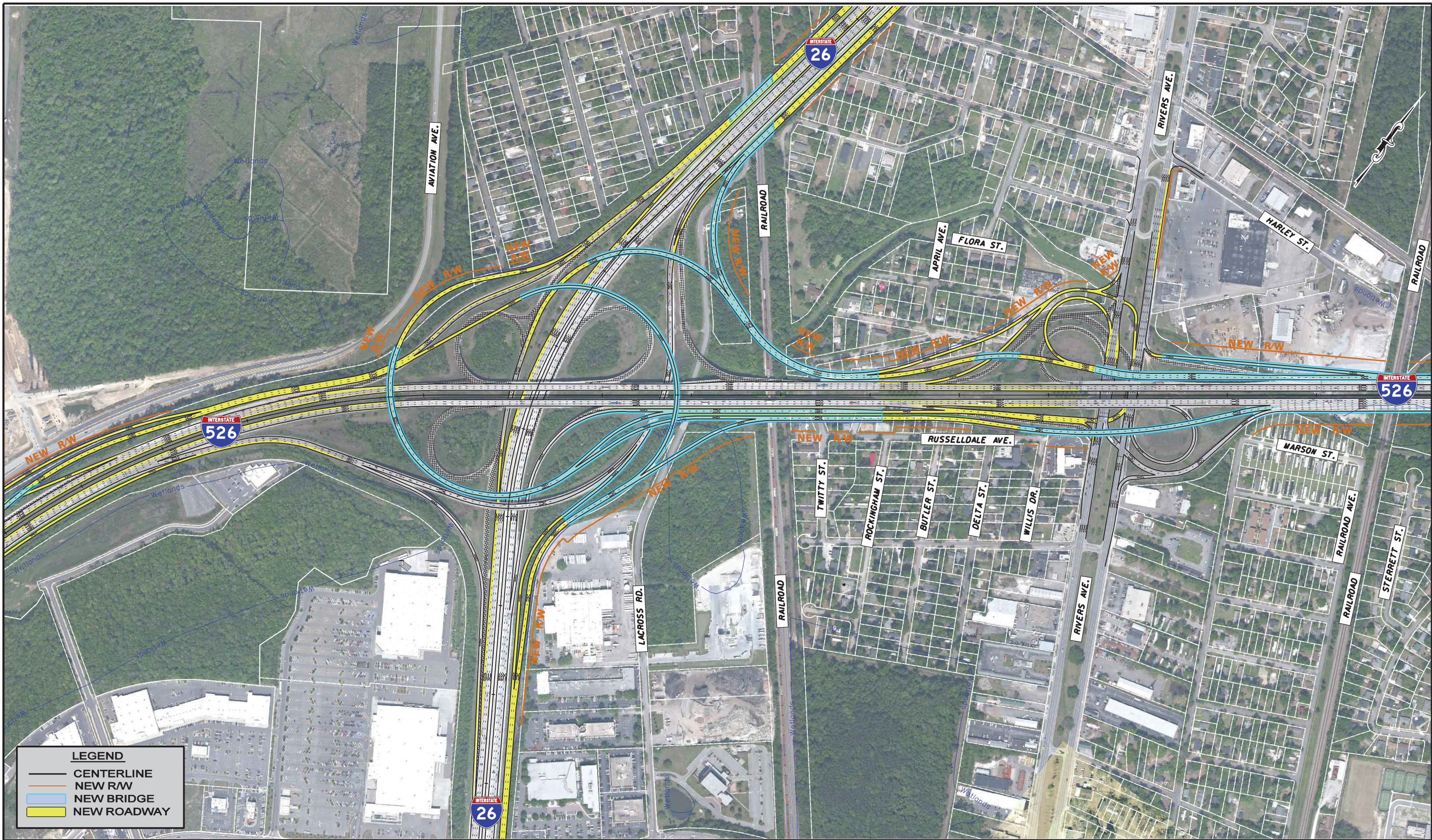
I-26 / 526
SYSTEM TO SYSTEM
INTERCHANGE IMPROVEMENTS



SCALE: 1" = 500'

PHOTOGRAPHY DATE: 2011 SEPTEMBER 2012 SHEET 2

I:\11059\system to system\Plan Sht_Alt_02.dgn 10/9/2012



ALTERNATIVE 2

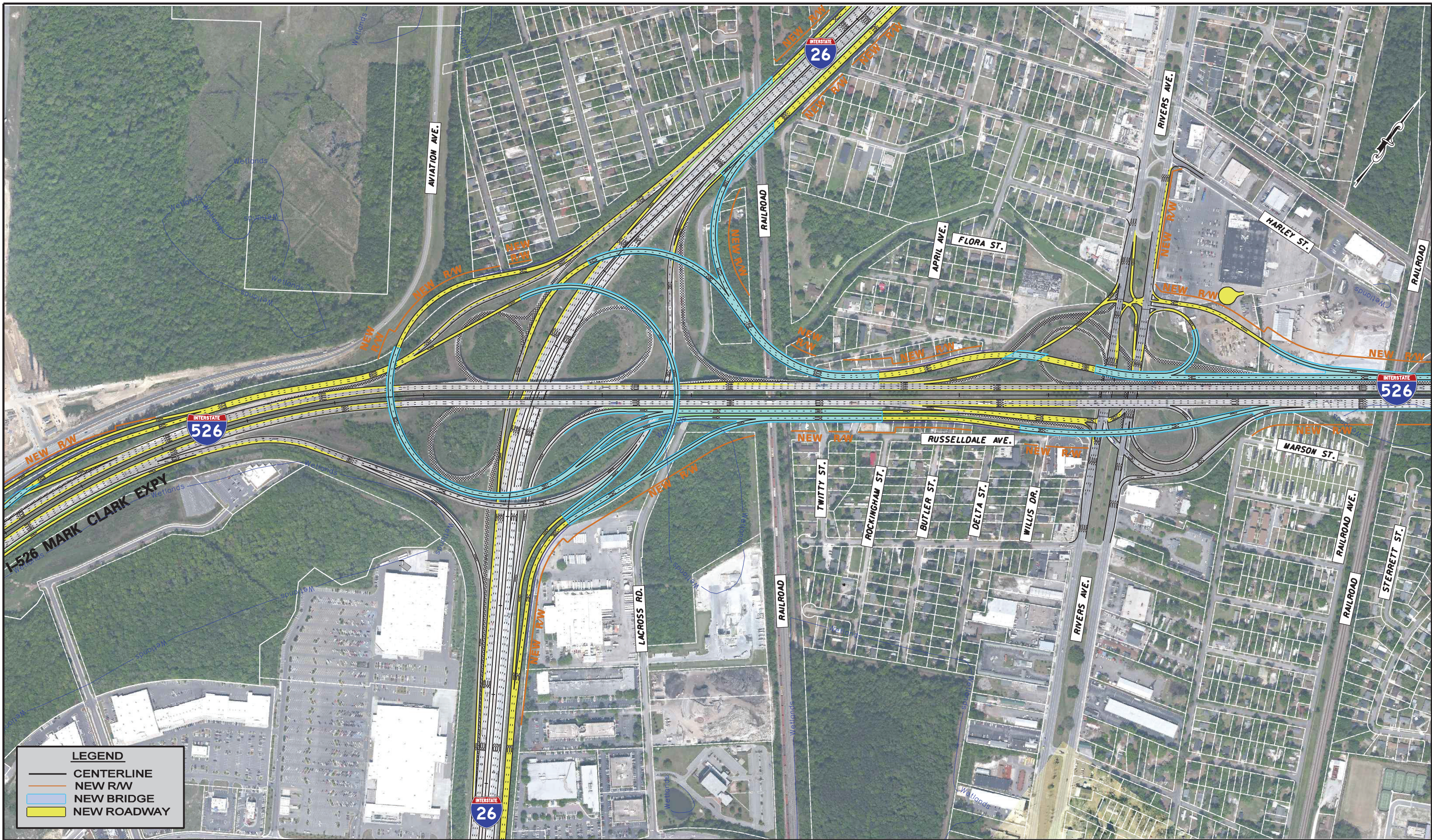


I-26 / 526
SYSTEM TO SYSTEM
INTERCHANGE IMPROVEMENTS



PHOTOGRAPHY DATE: 2011 SEPTEMBER 2012 SHEET 3

I:\11059\system to system\Plan Sht_Alt_03.dgn 10/9/2012



LEGEND

- CENTERLINE
- NEW R/W
- NEW BRIDGE
- NEW ROADWAY

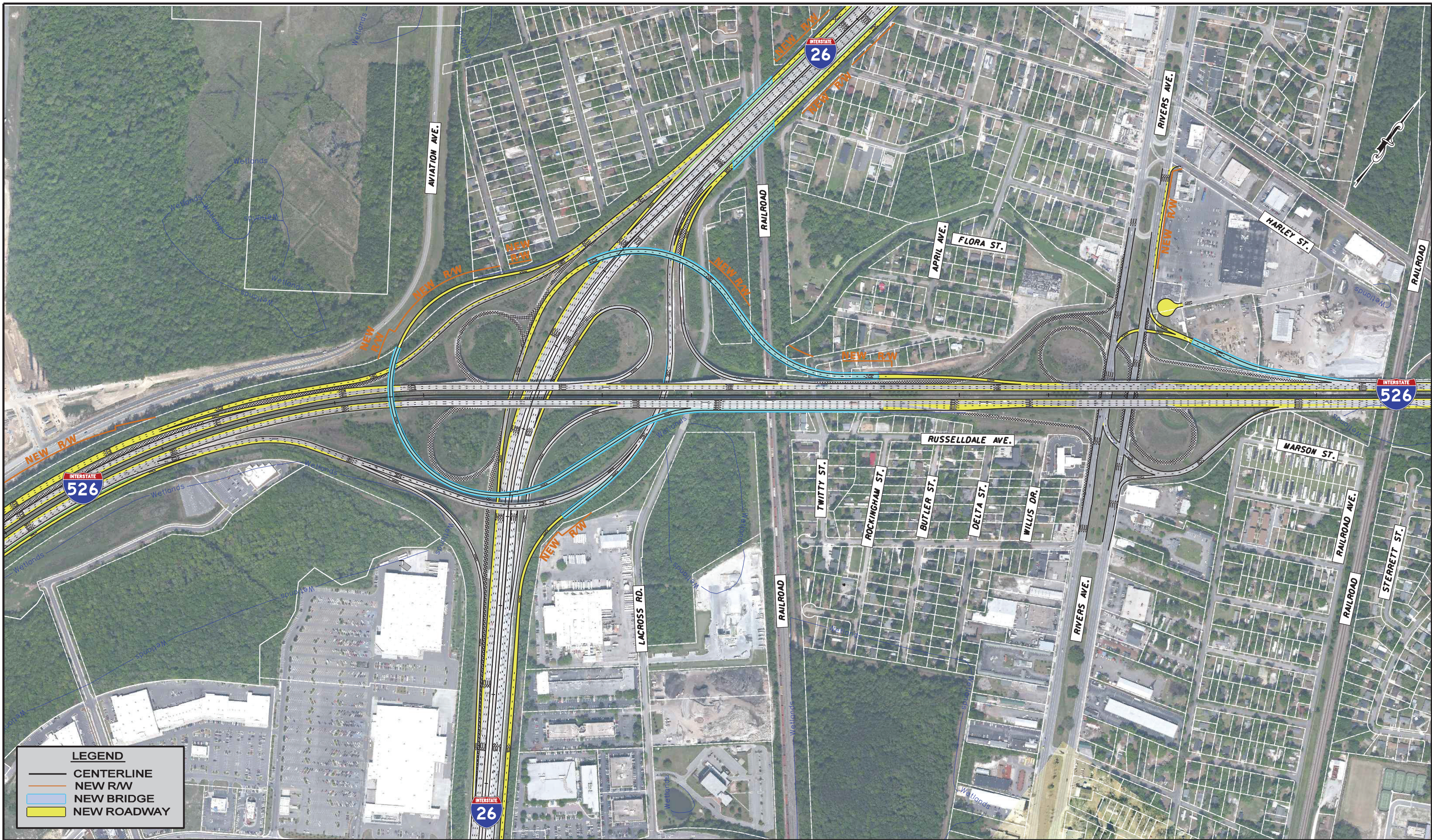
ALTERNATIVE 3



I-26 / 526
SYSTEM TO SYSTEM
INTERCHANGE IMPROVEMENTS



I:\11059\system to system\Plan Sht_Alt_04.dgn 10/9/2012



ALTERNATIVE 4



I-26 / 526
SYSTEM TO SYSTEM
INTERCHANGE IMPROVEMENTS



PHOTOGRAPHY DATE: 2011 SEPTEMBER 2012 SHEET 5

I:\11059\system to system\Plan Sht_Alt_05.dgn 10/9/2012



ALTERNATIVE 5



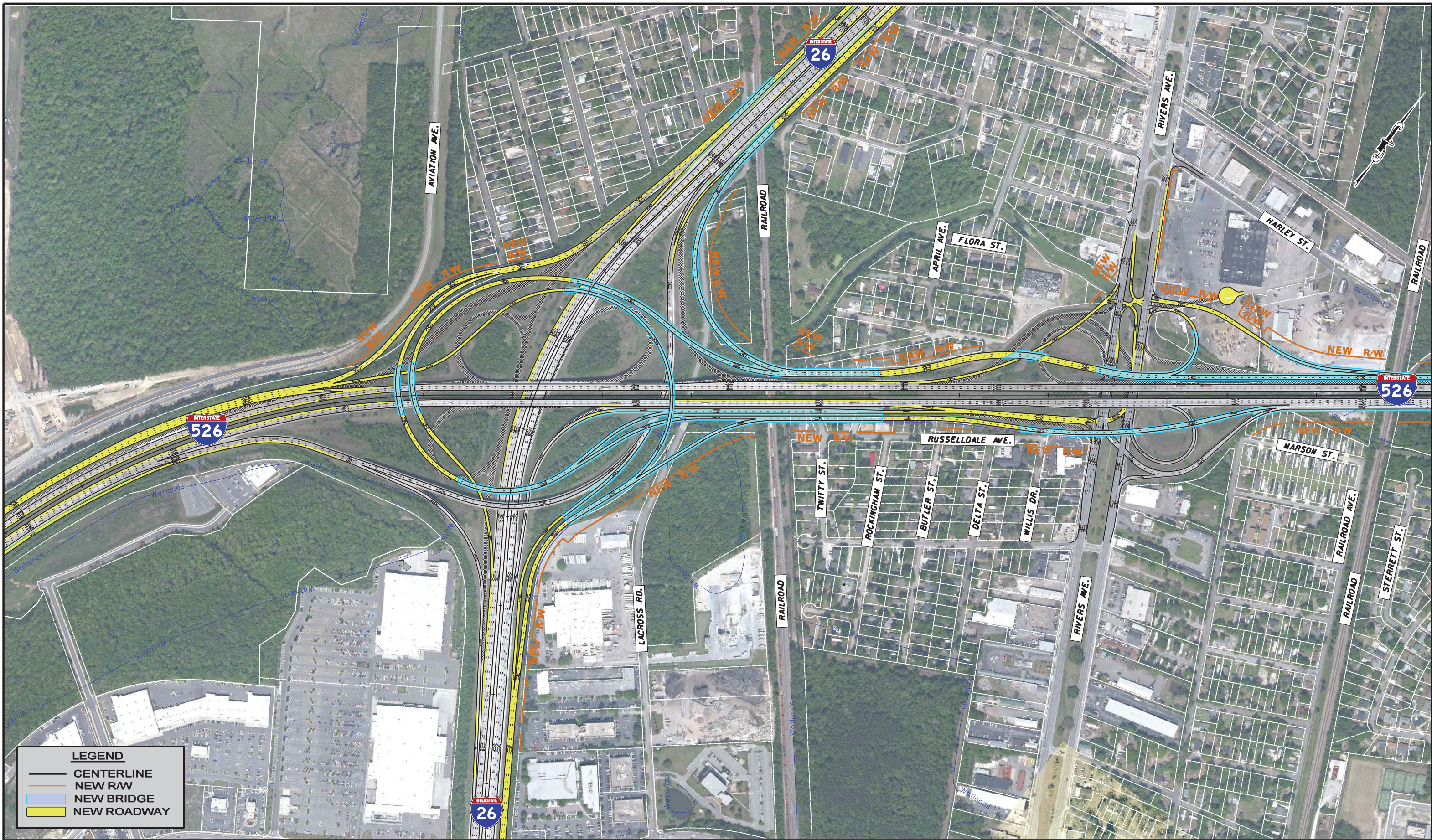
I-26 / 526
SYSTEM TO SYSTEM
INTERCHANGE IMPROVEMENTS



PHOTOGRAPHY DATE: 2011 SEPTEMBER 2012 SHEET 6

10/9/2012

I:\11059\system to system\Plan Sht_Alt_06.dgn



LEGEND

- CENTERLINE
- NEW R/W
- NEW BRIDGE
- NEW ROADWAY

ALTERNATIVE 6



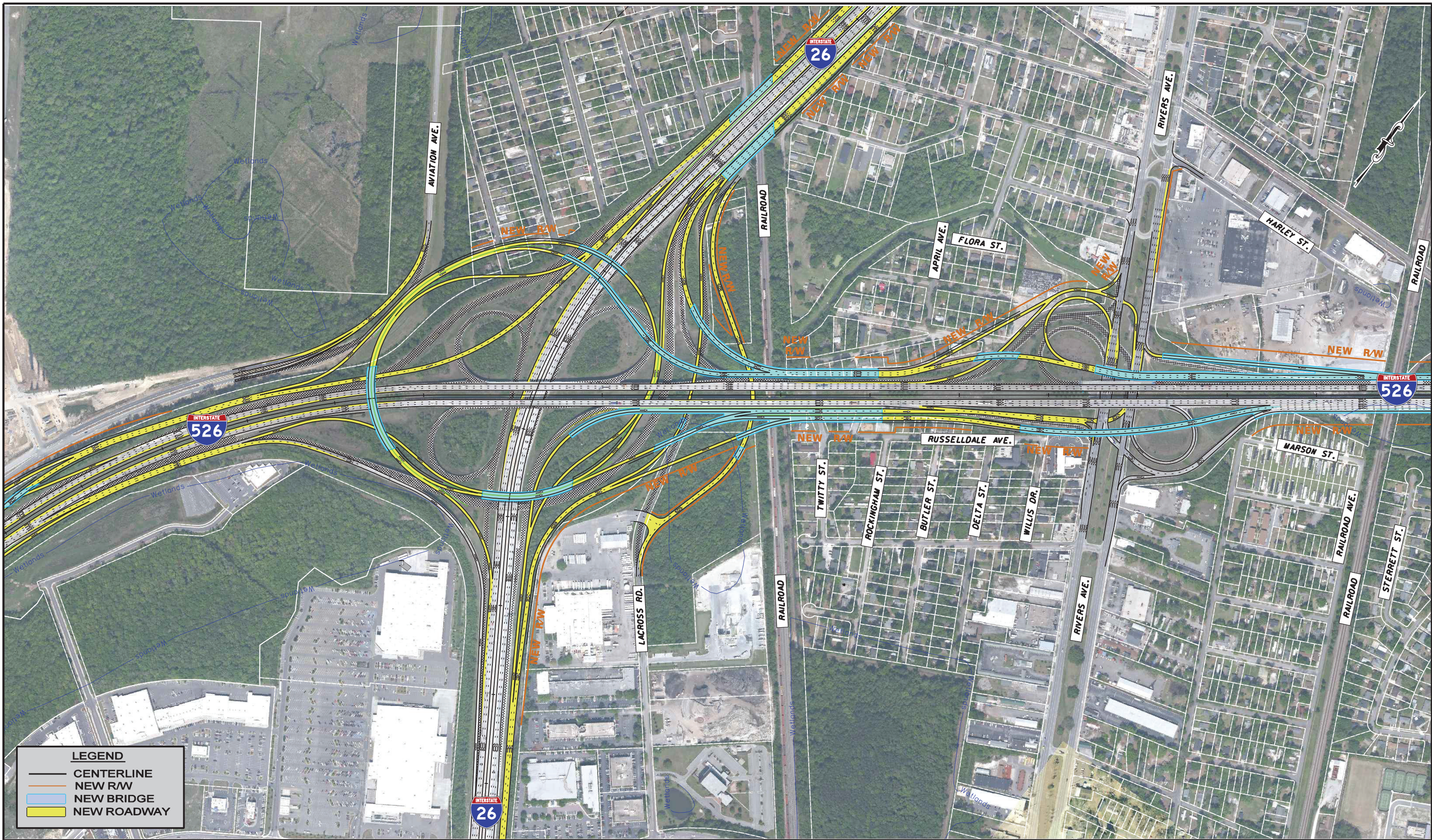
I-26 / 526
SYSTEM TO SYSTEM
INTERCHANGE IMPROVEMENTS



SCALE: 1" = 500'

PHOTOGRAPHY DATE: 2011 SEPTEMBER 2012 SHEET 7

I:\11059\system to system\Plan Sht_Alt_07.dgn 10/9/2012



LEGEND

CENTERLINE

NEW R/W

NEW BRIDGE

NEW ROADWAY

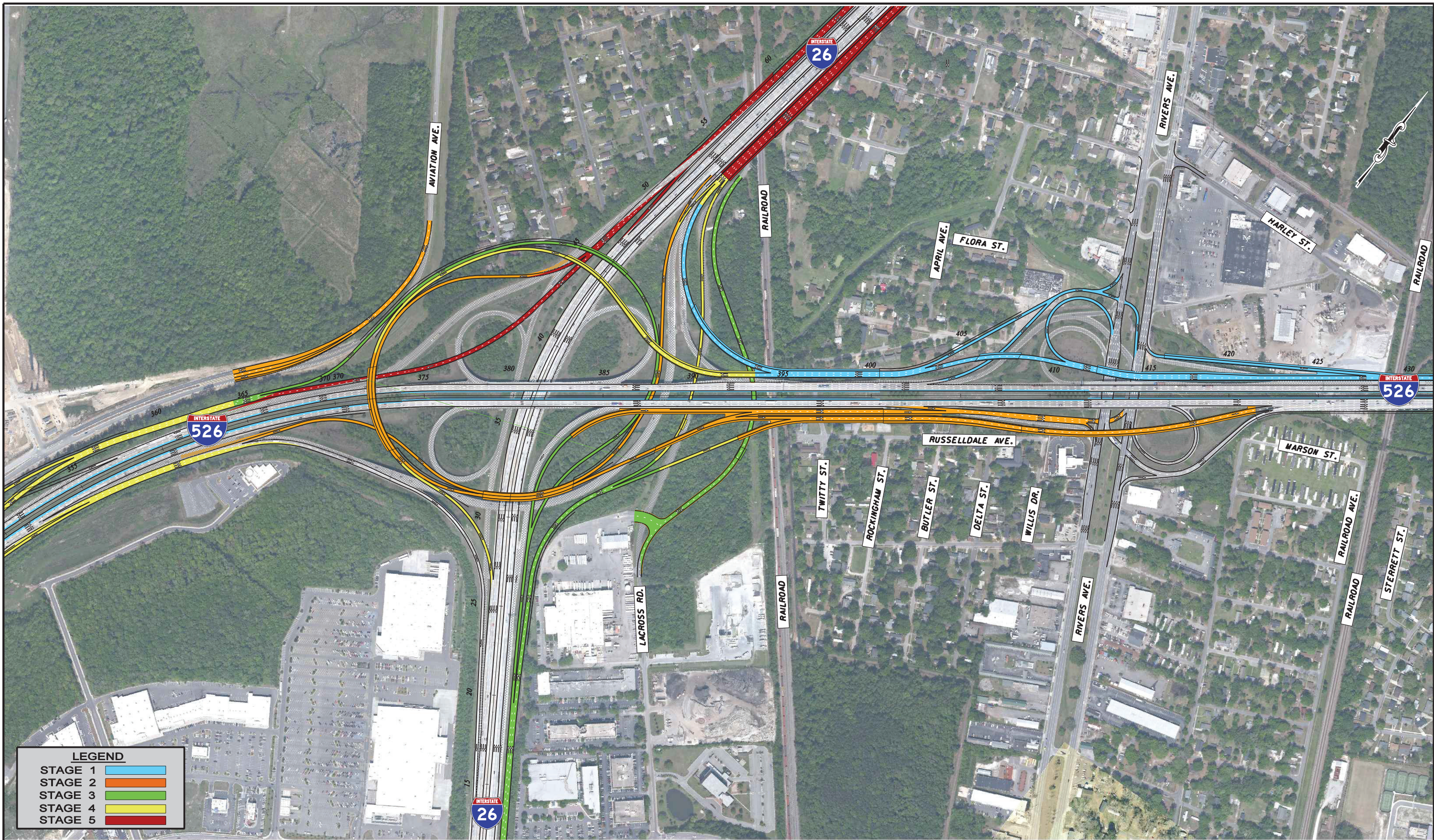
ALTERNATIVE 7



I-26 / 526
SYSTEM TO SYSTEM
INTERCHANGE IMPROVEMENTS



10/9/2012
L:\11059\System to System\Construction Staging.dgn



LEGEND	
STAGE 1	
STAGE 2	
STAGE 3	
STAGE 4	
STAGE 5	

CONSTRUCTION STAGING FOR ALTERNATE 7



I-26 / 526 SYSTEM TO SYSTEM INTERCHANGE IMPROVEMENTS



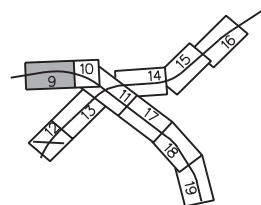
SCALE: 1" = 500'

PHOTOGRAPHY DATE: 2011 SEPTEMBER 2012 SHEET 8

I:\11059\system to system\Sht_01.dgn
10/9/2012



MATCHLINE SEE SHEET NO. 10



ALTERNATIVE 7 I-26 / 526
SYSTEM TO SYSTEM
INTERCHANGE IMPROVEMENTS



SCALE: 1" = 200'

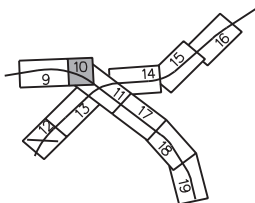
PHOTOGRAPHY DATE: 2011 SEPTEMBER 2012 SHEET 9

10/9/2012
I:\11059\system to system\shl_02.dgn



LEGEND

- CENTERLINE
- NEW R/W
- NEW BRIDGE
- NEW ROADWAY
- NEW MEDIAN BARRIER
- NEW RETAINING WALL



**ALTERNATIVE 7 I-26 / 526
SYSTEM TO SYSTEM
INTERCHANGE IMPROVEMENTS**



SCALE: 1" = 200'

PHOTOGRAPHY DATE: 2011 SEPTEMBER 2012 SHEET 10

MATCHLINE SEE SHEET NO. 14

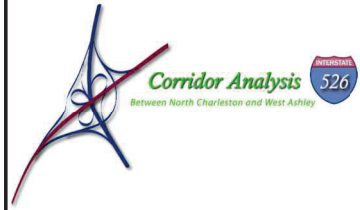
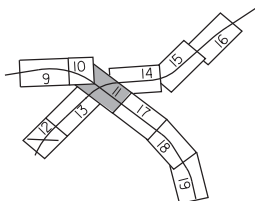
MATCHLINE SEE SHEET NO. 10

MATCHLINE SEE SHEET NO. 17

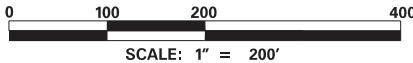
MATCHLINE SEE SHEET NO. 13

LEGEND

- CENTERLINE
- NEW R/W
- NEW BRIDGE
- NEW ROADWAY
- NEW MEDIAN BARRIER
- NEW RETAINING WALL



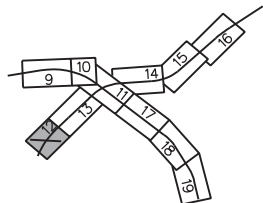
ALTERNATIVE 7 I-26 / 526
SYSTEM TO SYSTEM
INTERCHANGE IMPROVEMENTS



I:\11059\system to system\shl_04.dgn
10/9/2012



MATCHLINE SEE SHEET NO. 13

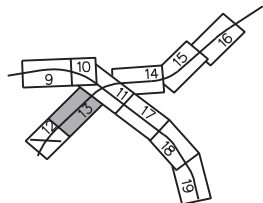


**ALTERNATIVE 7 I-26 / 526
SYSTEM TO SYSTEM
INTERCHANGE IMPROVEMENTS**

0 100 200 400
SCALE: 1" = 200'

PHOTOGRAPHY DATE: 2011 SEPTEMBER 2012 SHEET 12

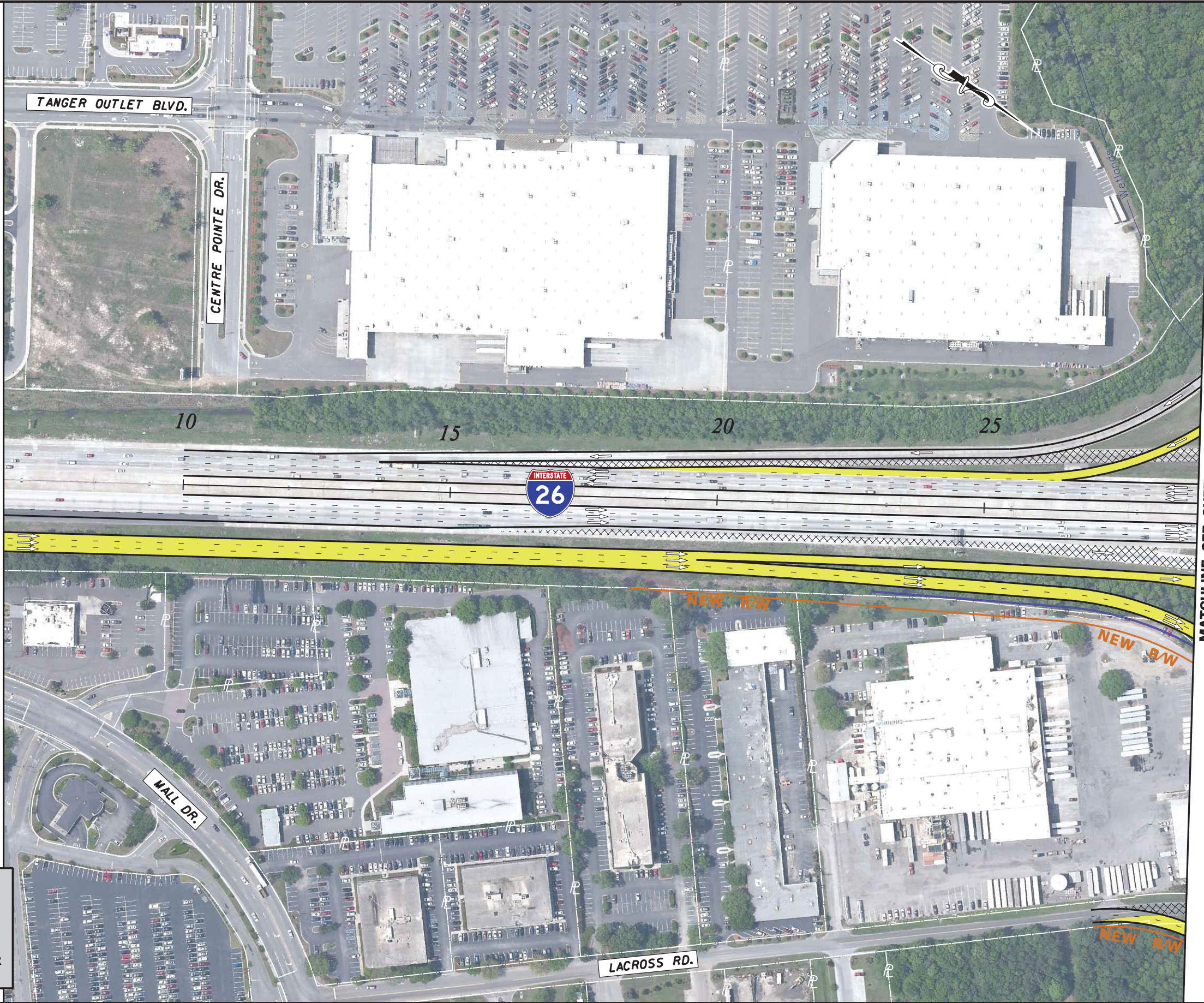
I:\11059\system to system\shl_05.dgn
10/9/2012



LEGEND

- CENTERLINE
- NEW R/W
- NEW BRIDGE
- NEW ROADWAY
- NEW MEDIAN BARRIER
- NEW RETAINING WALL

MATCHLINE SEE SHEET NO. 12



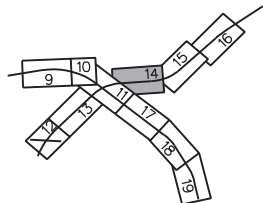
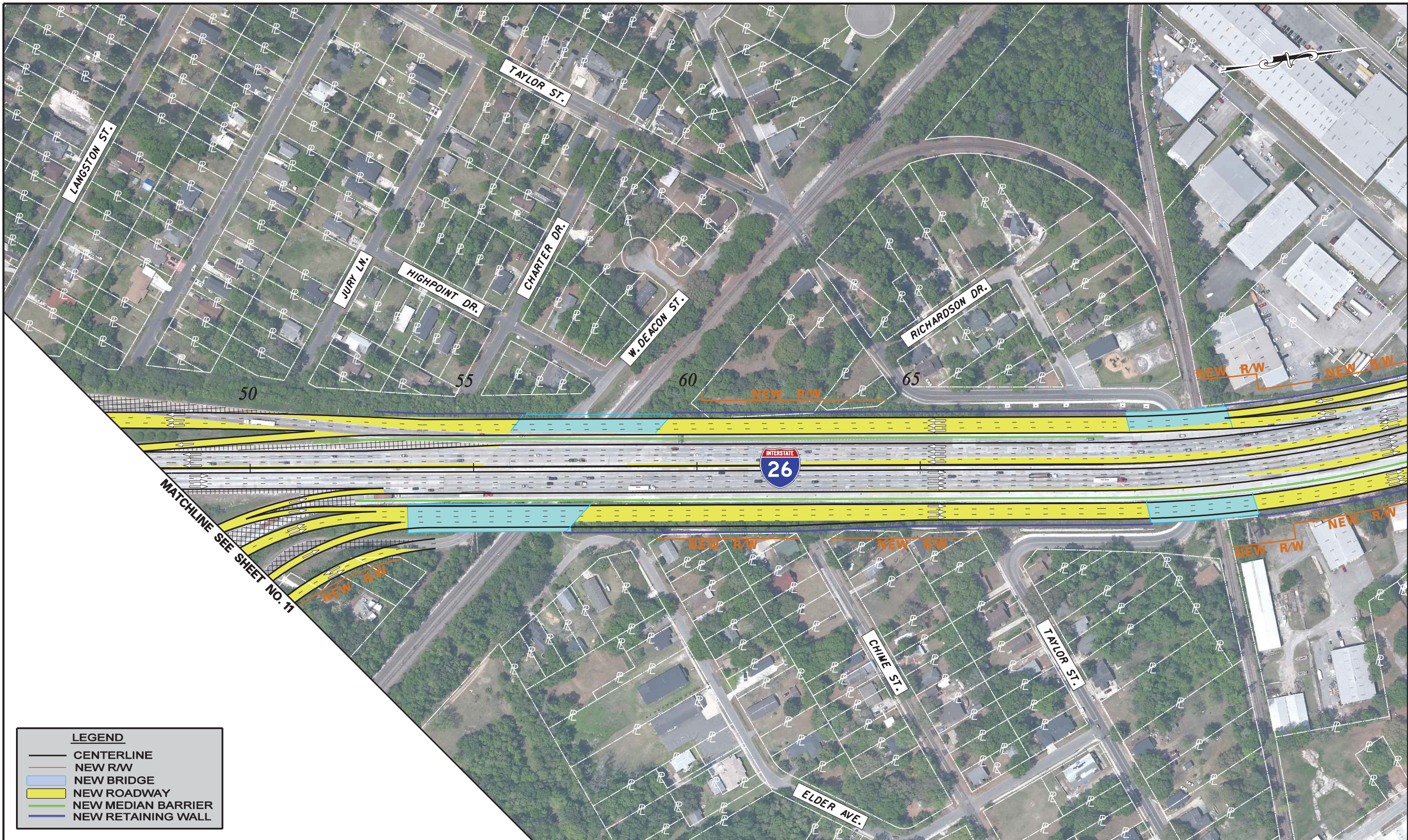
MATCHLINE SEE SHEET NO. 11



**ALTERNATIVE 7 I-26 / 526
SYSTEM TO SYSTEM
INTERCHANGE IMPROVEMENTS**



I:\11059\system to system\shl_06.dgn
10/9/2012



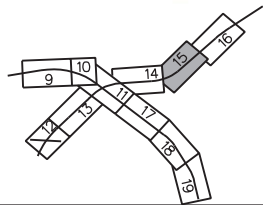
**ALTERNATIVE 7 I-26 / 526
SYSTEM TO SYSTEM
INTERCHANGE IMPROVEMENTS**



SCALE: 1" = 200'

PHOTOGRAPHY DATE: 2011 SEPTEMBER 2012 SHEET 14

10/9/2012
I:\1059\system to system\shl_07.dgn



**ALTERNATIVE 7 I-26 / 526
SYSTEM TO SYSTEM
INTERCHANGE IMPROVEMENTS**



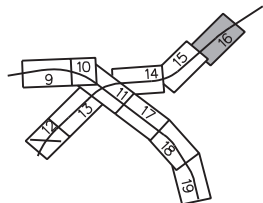
SCALE: 1" = 200'

I:\11059\system to system\shL_08.dgn
10/9/2012

MATCHLINE SEE SHEET NO. 15

LEGEND

- CENTERLINE
- NEW R/W
- NEW BRIDGE
- NEW ROADWAY
- NEW MEDIAN BARRIER
- NEW RETAINING WALL



**ALTERNATIVE 7 I-26 / 526
SYSTEM TO SYSTEM
INTERCHANGE IMPROVEMENTS**



SCALE: 1" = 200'

PHOTOGRAPHY DATE: 2011 SEPTEMBER 2012 SHEET 16

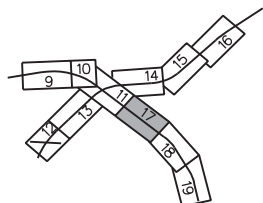
10/9/2012
I:\11059\system to system\shl_10.dgn

MATCHLINE SEE SHEET NO. 11

MATCHLINE SEE SHEET NO. 18

LEGEND

- CENTERLINE
- NEW R/W
- NEW BRIDGE
- NEW ROADWAY
- NEW MEDIAN BARRIER
- NEW RETAINING WALL

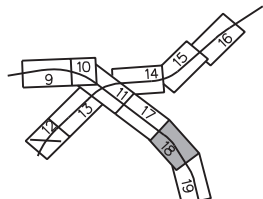
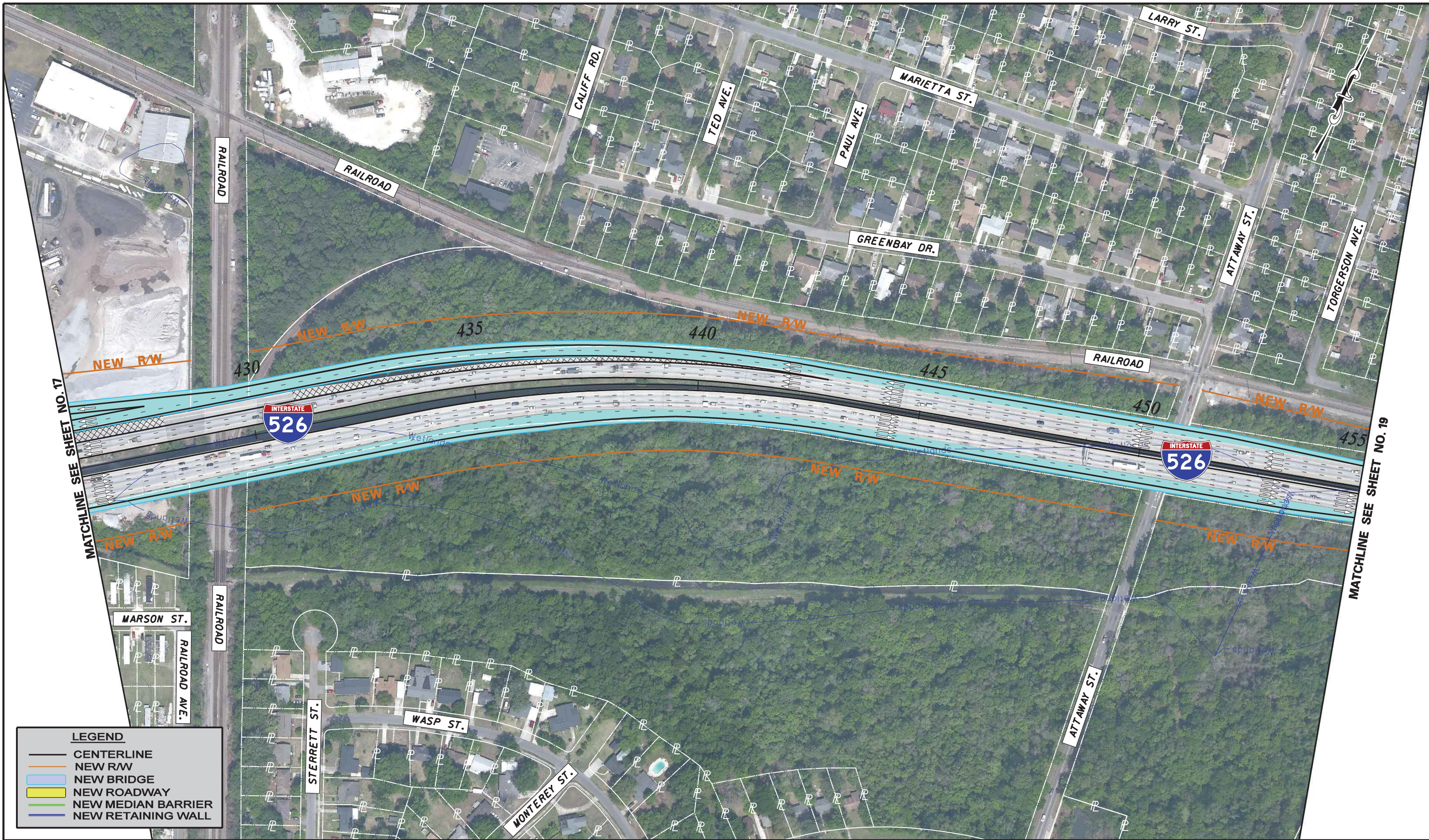


**ALTERNATIVE 7 I-26 / 526
SYSTEM TO SYSTEM
INTERCHANGE IMPROVEMENTS**



SCALE: 1" = 200'

10/9/2012
I:\11059\system to system\shl_11.dgn



**ALTERNATIVE 7 I-26 / 526
SYSTEM TO SYSTEM
INTERCHANGE IMPROVEMENTS**

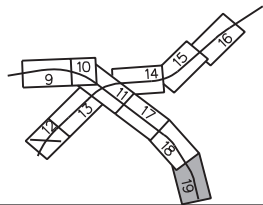
0 100 200 400
SCALE: 1" = 200'

PHOTOGRAPHY DATE: 2011 SEPTEMBER 2012 SHEET 18



LEGEND

- CENTERLINE
- NEW R/W
- NEW BRIDGE
- NEW ROADWAY
- NEW MEDIAN BARRIER
- NEW RETAINING WALL



**ALTERNATIVE 7 I-26 / 526
SYSTEM TO SYSTEM
INTERCHANGE IMPROVEMENTS**



SCALE: 1" = 200'